

TruePro™ Prestained Protein Ladder

Cat. No. MP01-500 2x250 μ l

Description

The **TruePro™** Prestained Protein Ladder is a three-color protein standard with 12 pre-stained proteins covering a wide range of molecular weights from 10 to 245 kDa. Proteins are covalently coupled with a blue chromophore except for two reference bands (one green and one red band at 25 kDa and 75 kDa respectively). The **TruePro™** Prestained Protein Ladder is designed for monitoring protein separation during SDS-polyacrylamide gel electrophoresis, verification of Western transfer efficiency on membranes (PVDF, nylon, or nitrocellulose) and for approximating the size of proteins. The ladder is supplied in gel loading buffer and is ready to use.

General Use

1. Allow the **TruePro™** Protein Ladder equilibrate to room temperature before use. After thawing completely, mix them thoroughly.
2. Load 3 μ l or 4 μ l on 15-well or 10-well mini-gel respectively.
3. Return the remaining stain to the recommended storage condition after use.

Contents

Approximately 0.1~0.4 mg/ml of each protein in the buffer (20mM Trisphosphate, pH 7.5 at 25°C), 2 % SDS, 0.2 mM Dithiothreitol, 3.6 M Urea, and 15 % (v/v) Glycerol).

Storage

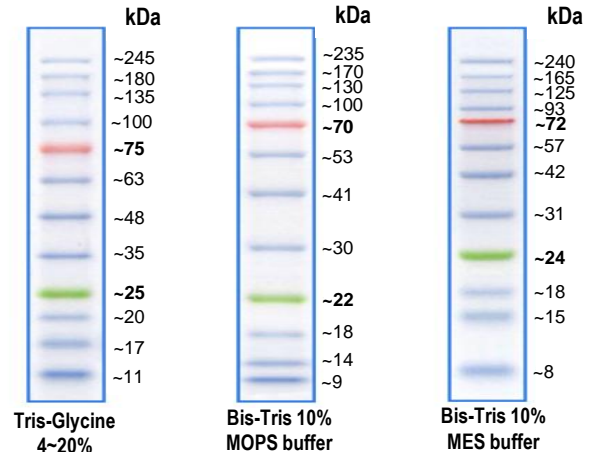
Stable for up to 3 months at 4°C. For long term storage, store at -20°C.

Quality Control

Under suggested conditions, **TruePro™** Prestained Protein Ladder resolves 12 major bands in 15% SDS-PAGE (Tris-glycine buffer).

Guide for Molecular Weight Estimation (kDa)

Migration patterns of **TruePro™** Prestained Protein Ladder in different electrophoresis conditions are listed below.



Note : The apparent molecular weight (kDa) of each protein has been determined by calibration against an unstained protein standards; Supplemental data should be considered for more accurate adjustment in different electrophoresis conditions.

Caution : Not intended for human or animal diagnostic or therapeutic uses.